

THE *Southwestern*

A SOUTHWESTERN ELECTRIC COOPERATIVE MEMBER MAGAZINE

JULY 2024 • VOLUME 76 • ISSUE 7

Restoration Roundup

SCENES FROM
APRIL'S OUTAGE

Phishing Lines

THE LOWDOWN ON
INTERNET SCAMS

EMPLOYEE
BLOOD DRIVE

SCHOLARSHIP
WINNERS

OFFICES CLOSED
FRIDAY, AUG. 9

\$30 Bill Credit

**SAVE THE VOTER
REGISTRATION CARD
IN THIS ISSUE!**

**ORU-FUNDED
ACTIVITY BOOK
WINS AWARD**





INSIDE THIS ISSUE

04 News & Notes

Life, liberty and the pursuit of ... a \$25 bill credit? That's what's at stake if you can find Lady Liberty in this month's magazine.

05 \$30 Bill Credit

Redeem the 2024 voter registration card in the back cover of this magazine for a \$30 bill credit.

08 Annual Meeting

Three candidates have filed their paperwork to be on this year's board of directors election ballot. Read more about them and this year's Annual Meeting.

09 Power for Progress

Southwestern Electric's Scholarship Committee awarded \$1,200 scholarships to 12 students this year, bringing the total to \$312,400 since the scholarship program's inception. Read on.

10 Phishing Scams

Southwestern Director of IT Thaddius Intravaia offers tips to stay safe in an increasingly deceptive cyber environment.

12 Down and Out

On the evening of April 18, strong storms left 3,200 members without power. We chronicle the damage and the recovery efforts in photos.

Brandon Jansen,
journeyman lineman.



525 U.S. Route 40, Greenville, IL 62246.
Phone: (800) 637-8667. Office Hours:
Monday-Friday, 8:00 a.m. - 4:30 p.m.
Visit us on the Web at www.sweci.com.

Board of Directors

Jerry Gaffner, President Greenville
Jared Stine, Vice President..... St. Elmo
Annette Hartlieb, Secretary Vandalia
Sandy Grapperhaus, Treasurer Collinsville
William "Bill" Jennings Alhambra
Brad Lurkins Greenville
Ann Schwarm Loogootee
Marvin Warner Pocahontas
Ted Willman Greenville

CEO

Bobby Williams Chief Executive Officer

The Southwestern

Joe Richardson Editor
e-mail: joe.richardson@sweci.com
Mike Barns Art Director
e-mail: mike.barns@sweci.com
Nathan Grimm Media Specialist
e-mail: nathan.grimm@sweci.com

Satellite Locations:

St. Jacob Office
10031 Ellis Road, St. Jacob, IL 62281

St. Elmo Distribution Center
2117 East 1850 Avenue, St. Elmo, IL 62458

Southwestern Electric Cooperative reserves the right to re-print member comments and correspondence in its cooperative educational and promotional materials.

The Southwestern (USPS 612-500) is published monthly by Southwestern Electric Cooperative, Inc. Periodical postage paid at Greenville, IL. Subscriptions cost \$10.67 per year. Comments or questions regarding material in this publication may be mailed to Joe Richardson, editor of The Southwestern, c/o Southwestern Electric Cooperative, Inc., 525 US Route 40, Greenville, IL 62246, or e-mailed to joe.richardson@sweci.com.

Postmaster: Send address corrections to The Southwestern, 525 U.S. Route 40, Greenville, IL 62246.

Apple and the Apple logo are trademarks of Apple Inc., registered in the U.S. and other countries. App Store is a service mark of Apple Inc. Android, Google Play and the Google Play logo are trademarks of Google Inc.

14 Energy & Efficiency

We've all heard the line, "It's not the heat, it's the humidity." In summer, that means dehumidifiers can be a person's best friend. Learn how they help beat the heat — and humidity — inside.

16 Health & Safety

Flood waters might not seem dangerous but underestimating them can be fatal. We have some tips to keep you safe and dry when creeks and rivers are on the rise.

18 Out & About

So much to see, so little time. That was the challenge this month when our editor visited Eldon Hazlet State Park.

20 Who-What-Where

One reader named our May mystery man, but can you identify the location of this month's trilside tabby?

22 Co-op Kitchen

The only thing better than a cold drink on a hot day is one of these sweet-tasting summer sips.

24 Current Events

The hills (and parks) (and square) are alive with the sound of music in July.

26 Final Frame

Reflecting on April.

NEWS & NOTES

ON THE COVER

Journeyman linemen Braden Clark and Tyler Kunz make repairs on Rockwell Road in Madison County after an April storm interrupted power to 3,200 members. See our story on page 12.



CO-OP REMINDERS

July 4 Offices closed in observance of Independence Day.

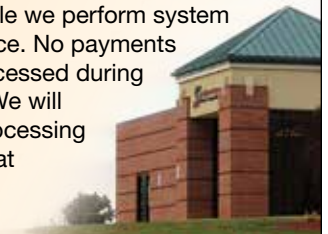
July 8 Payment processing will be unavailable from midnight to 4 a.m., during system maintenance. We will resume processing payments at 4:01 a.m.

August 9 Offices closed for employee safety training. See next page.

Sept. 2 Offices closed for Labor Day.

Sept. 7 Southwestern Electric Cooperative Annual Meeting.

Sept. 9 Payment processing systems will be unavailable from midnight to 4 a.m., while we perform system maintenance. No payments will be processed during this time. We will resume processing payments at 4:01 a.m.



Reader Contest

We've hidden Lady Liberty in your magazine. Your job is to find her. The actual image may be larger or smaller than what you see here. We may change the color to make the contest more challenging. If you find the Statue of Liberty, email us or send a postcard with your name, address, phone number, and the page number where you found the image. Please email us at thesouthwestern@sweci.com or send your postcard to The Southwestern Magazine, Southwestern Electric Cooperative, 525 US Route 40, Greenville, IL 62246.

Entries must be postmarked or in our thesouthwestern@sweci.com inbox by the first day of the month following the month of



publication. For our July contest, we'll need your entries in our inbox or postmarked by August 1, 2024.

We'll choose one winner in a random drawing. Our winner will receive a \$25 credit on an upcoming electric bill. We'll publish the name of this month's contest winner in the October issue of The Southwestern.

MAY WINNER

Congratulations to Dewayne Elam of Vandalia. As the winner of our May Hide & Seek contest drawing, Dewayne will receive a \$25 credit on an upcoming electric bill. Thank you to everyone who participated in our May contest. This month's image appears at left. You'll find Hide & Seek rules below.

RULES TO PLAY BY

- One entry per membership per month.
- A membership can only win once per calendar year.
- No phone calls, texts, social media posts, walk-in traffic, carrier pigeons, singing telegrams or other clever means of communication that may occur to you.
- Please respond *only* by emailing us at thesouthwestern@sweci.com or by sending a postcard to The

Southwestern Magazine, Southwestern Electric Cooperative, 525 US Route 40, Greenville, IL 62246.

- Entries submitted by other methods will be disqualified.
- Entries emailed to other Southwestern Electric email addresses will be disqualified, deleted, then disqualified again, just to be safe.
- Entries mailed to other departments or included with other correspondence will likely never find

their way to the editor. If they do, they'll be disqualified. Also, he'll add you to his list of people who can't follow instructions. It's a long list and not one you care to be part of.

- July contest entries must be in our inbox or postmarked by August 1.
- We'll never hide the image on the front or back cover or on the page where we list the rules.

Offices Closed Friday, Aug. 9 for Employee Safety Training

On Friday, Aug. 9, Southwestern Electric will provide a full day of safety training for all cooperative employees. Our offices will be closed and our personnel will be unavailable for meetings, phone calls and email.

Southwestern Electric line crews will be responding to power outages and emergency calls on Aug. 9. If you lose power, please call us at 800-637-8667. Our afterhours call center will dispatch a line crew to restore your service.

The cooperative will resume regular business hours on Monday, Aug. 12.

“We believe cultivating a safety-first culture requires the commitment of our workforce and the support of our families. With that in mind, we’ve invited our employees to include their families in our Safety Day training,” said Southwestern CEO Bobby Williams. “I want to thank our membership for supporting our efforts to promote a safety-first culture at Southwestern Electric Cooperative.”



MEMBER MAIL

A sincere thank you for publishing a great magazine full of interesting and useful articles. I especially appreciate the “Current Events” section every month as it covers a large geographic area of smaller events providing insight into the various community activities our family can attend. Many times our lives get razor focused on the immediate town we live in and we don’t realize everything else we potentially miss out on.

So a sincere thanks. I look forward to future issues!

Thanx! ^_^ Ariel Garcia, Collinsville

Redeem Southwestern Voter Registration Card on Back Cover for \$30 Bill Credit

To ensure you have the 2024 voter registration card in time to claim your \$30 bill credit for voting in this year’s election, we’re including a card in both the July and August issues again this year. The cards are identical. You only need one card to register and vote, and you may register and vote only one time.

To expedite voting, members are asked to bring the registration card printed on the back cover of the July issue or the August special edition of The Southwestern to one of Southwestern’s voting locations. Members will earn a \$30 bill credit by presenting their preprinted registration card when they vote in this year’s election of directors. A schedule with dates, times and locations appears on page 27 below the voter registration card.

Southwestern Electric Cooperative’s 86th Annual Meeting of Members will be held at American Farm Heritage Museum, 1395 Museum Avenue, Greenville, IL 62246. More annual meeting information will appear in the August issue of The Southwestern and online at sweci.com. Questions may be directed to Susan File, vice president of member services, at 800-637-8667 or susan.file@sweci.com.

VOTER REGISTRATION CARD 2024 Please sign and present this card at the registration table.

86th Annual Meeting of Members

Saturday, September 7, 2024



Member Signature _____

Please enroll me in Operation Round Up

PLEASE UPDATE YOUR CONTACT INFORMATION

Home Phone # (if applicable) _____

Cell Phone #: _____

Service Address: _____

Billing Address: _____

Email Address: _____

Fill out and present this registration card to receive an additional \$10 bill credit!

ORU-Funded Activity Book Recognized by Illinois Association of Museums

An activity book developed for the DeMoulin Museum in Greenville and published with funding from Operation Round Up (ORU) recently earned honors from the Illinois Association of Museums (IAM). The book, which was developed by DeMoulin Museum curator John Goldsmith, earned an Award of Merit in the Printed Materials category of IAM Awards 2024.

“Everyone wants their visitors to remember them, and by using a small grant as seed money the DeMoulin Museum has been able to create a take-home coloring book that helps their young visitors do that,” said Deb Fandrei, treasurer of IAM, during the April 5 award announcement. “The excellent surprise is that the adult visitors have enjoyed the coloring book almost as much as the children have.”

An \$800 grant awarded by ORU in 2022 largely funded the museum’s activity book, which includes 12 pages of DeMoulin-themed puzzles, illustrations for coloring, and trivia. The museum published 500 copies, distributing dozens Jan. 21, 2023, during Kids Day, a celebration which featured magic, museum tours, and a commemoration of the book’s publication.

“The museum has become a popular attraction with kids, so it was natural that we’d want something for young folks to take home as a remembrance of their visit,” Goldsmith said at the time. “A coloring and activity book offered the best opportunities to engage children in a meaningful way.”

Goldsmith designed the book to recall exhibits, artifacts and experiences at the museum. “The DeMoulin Museum

tells the diverse story of DeMoulin Bros., but not in a dry, stuffy way,” he said. “We’re about fun.”

Today, DeMoulin Bros. & Co. produces some of the country’s finest band uniforms. But in the early 20th century, lodge regalia, paraphernalia and initiation devices — including paddle machines, exploding telephones, electric chairs, branding irons and bucking goats — were DeMoulin’s

stock-in-trade. While the devices are largely gone, the DeMoulin Museum is dedicated to seeing they aren’t forgotten. Goldsmith offers tours through the company’s history, sharing a sampling of arcane inventions, including collapsing chairs, sliding stairs, elaborate costumes worn by lodge elders and initiates, and photos and personal effects that chronicle the history of DeMoulin Bros. and the men and women who built the company.

ORU awarded a \$750 grant to the museum in 2014, which sponsored the production of a free-standing interactive exhibit that complements the museum’s band uniform collection.

An independent museum network, IAM exists to provide advocacy, promote best practices, and foster the exchange of ideas for the Illinois museum community. IAM members represent communities and organizations of every size from every region of Illinois.

To learn more about IAM, go to <https://www.illinoismuseums.org>

Learn more about the DeMoulin Museum at www.demoulinmuseum.org, facebook.com/goatmuseum and instagram.com/demoulinmuseum, or by calling (618) 664-4115.



Gift of Life

On the morning of April 3, ImpactLife held a mobile blood drive in the parking lot of Southwestern Electric’s Greenville office. A dozen Southwestern Electric employees, directors and members donated, including Human Resources Administrator Marissa Horn (pictured). “Hosting a blood drive is such an easy way for us to give back to our community,” she said. “Less than 10 percent of the population donates blood. Bringing the blood mobile to our Greenville headquarters allows a convenient opportunity for our employees, directors, and community members to donate.”

ANNUAL MEETING 2024



Southwestern Electric's 86th Annual Meeting of Members will be held Saturday, Sept. 7, at 10 a.m. at the American Farm Heritage Museum, 1395 Museum Avenue, Greenville, IL 62246.

See you soon!

YOUR SPARE CHANGE CAN MAKE A **BIG** **DIFFERENCE** THROUGH OPERATION ROUND UP

Ready to get started? To join ORU today, just check the enrollment box on your electric bill or online, or contact Southwestern Electric Cooperative at (800) 637-8667. For more information about Operation Round Up, visit sweci.com.



Small change.
Big difference.

Paperless Billing Provides Quick, Easy Way to Avoid Fees Associated with Postal Delays

You've probably read about United States Postal Service delivery delays that began in 2020 and continue today. In recent months, you may have noticed payments you've mailed or your monthly paper billing statements aren't arriving as timely as in the past.

Many of us rely on our paper bill as a reminder that a payment is due. When that reminder doesn't arrive on time, we may forget to send a payment by the due date, which can lead to late fees or even disconnection for non-pay.

Paperless billing — or e-billing — provides a simple, reliable solution to penalties associated with postal delays and late payments. An e-bill is an electronic billing statement delivered to your email address. Our e-bill looks like our paper bill. Since our e-bill notification is sent to your inbox instead of your mailbox, it always arrives on time.

In addition to our e-bill, we also offer electronic notifications you can use as reminders, or to confirm your payment has been made. You can receive



There's no service charge for electronic payments. You can pay your bill by debit or credit card or by e-check or Auto-Pay with no added fees.

our reminders, alerts and notifications by text, voice mail and email.

Maybe you'd prefer not to think about your bill from month to month. With our Auto-Pay service, you won't need to. Auto-Pay automatically deducts your monthly payment from your checking account, or debit card or credit card. It's safe, convenient and reliable.

All of our electronic billing options — including debit and credit card payments, paying by e-check or using your credit or debit card to make a payment over the phone — are free; there are no service fees associated with our electronic payments.

If you'd like to learn more, please call 800-637-8667 and ask for our billing department. We're available Monday-Friday, 8 a.m. – 4:30 p.m.

With a single call and a few simple steps, you'll always know when your bill is due and when we've received your payment. We look forward to hearing from you!

86th ANNUAL MEETING OF MEMBERS

Three Candidates on the Ballot; Candidacy By Petition Deadline Pending at Press Time

Three incumbent directors have filed for candidacy in Southwestern Electric Cooperative's 2024 board election. In accordance with the cooperative's bylaws, a nine-member Nominations Committee convened on May 23 to submit candidates for three open seats (one per voting district) on the board of directors.

Southwestern Electric Cooperative's directors are responsible for establishing organizational direction and policies, ensuring member needs and concerns are given fair and timely treatment, and overseeing the overall financial stability of the cooperative.

As of June 3, board candidates include:

- District I: Incumbent William "Bill" Jennings, Alhambra
- District II: Incumbent Jerry Gaffner, Greenville
- District III: Incumbent Jared Stine, St. Elmo

Each elected director will serve a three-year term beginning Sept. 7, 2024. A profile of each board candidate will appear in the August 2024 edition of *The Southwestern*, which serves as the Official Notice of the 86th Annual Meeting of Members and Annual Report for the Fiscal Year 2023. If USPS delivery delays prevent your August issue from arriving in a timely fashion, you can view the magazine online at sweci.com.

Our voting schedule was developed to allow ample opportunity for early voting. Dates, times and locations appear on page 27.

Southwestern Electric Cooperative's 86th Annual Meeting of Members will be held Saturday, Sept. 7, at 10 a.m. at American Farm Heritage Museum, 1395 Museum Avenue, Greenville, IL 62246.

For more information regarding the annual meeting, please contact Susan File, vice president of member services, at (800) 637-8667 or susan.file@sweci.com.

Absentee Voting Guidelines

Section 4 (E): Proxy Voting, Absentee Voting and Voting by Entities: Proxy voting is prohibited. However, anything contained in the Bylaws to the contrary notwithstanding, a Member may vote by absentee ballot as follows: A Member desiring to cast his vote absentee, shall appear in person at the Cooperative's headquarters at Greenville, Illinois, during the ten weekdays preceding the election at regularly scheduled office hours, or at such other locations as may be established from time to time by the Board of Directors for the purpose of casting absentee ballots, during hours and days as directed by the Board of Directors and shall request an absentee ballot. An absentee ballot approved by the Credentials and Election Committee shall be provided and the Member shall cast such ballot secretly and seal such ballot in an envelope, which shall be provided in such sealed envelope to the Credentials and Election Committee. On the date of the Annual Meeting of the Members, the Credentials and Election Committee shall open and count such absentee ballots so provided. Any absentee ballot, which is delivered to the Credentials and Election Committee in an unsealed condition, shall be deemed invalid and shall not be counted. Notice of this Bylaw provision shall be provided to the Members of the Cooperative in the notice of Annual Meeting. Voting by Members other than Members who are Natural Persons shall be allowed only upon the presentation to the Cooperative by a duly appointed officer or agent of such Member (prior to or upon registration of such Member at each Member meeting, or when requesting an absentee ballot) of satisfactory evidence entitling such officer or agent presenting the same to cast a vote on behalf of such Member.

Southwestern Students Earn Power for Progress Scholarships

Since 1995, Southwestern Electric Cooperative's Power for Progress Scholarship Program has provided \$312,400 in financial assistance to a total of 450 students.

This year the cooperative awarded \$1,200 scholarships to 12 students, including 10 graduating seniors and two students who graduated prior to 2024.

Each year, dozens of applications are evaluated by Southwestern Electric Cooperative's Scholarship Committee. The committee is composed of nine judges. Each judge independently evaluates the merits of every application against an extensive list of criteria, including financial need, academic success, employment, and participation in extracurricular and volunteer activities.

Southwestern Electric scholarship recipients may use the awarded funds to attend any accredited university, college or vocational school in the U.S.

This year's Power for Progress scholarship recipients are:

Graduating Seniors

- Alayna Benhoff
- Hunter Clark*
- Hannah Eade
- Kathryn Eckhardt
- Ava Hollinshead
- Michael Matesa
- Blake Moore
- Samantha Oller
- Adam Reiniger
- Hannah Rensing
- Marissa Summers

- Mater Dei High School
- Greenville High School
- Triad High School
- Vandalia Community High School
- Altamont Community High School
- Staunton High School
- Staunton High School
- Father McGivney Catholic High School
- Collinsville High School
- Highland High School
- Beecher City Jr./Sr. High School

Post-high school scholarship recipients

- Gloria Bremer
- Madyson Hill
- Greenville University
- Wichita State University

*Hunter Clark is the Alan G. Libbra Memorial Scholarship winner.

Congratulations to our 2024 Power for Progress Scholarship recipients!
It's a privilege to be part of your journey.



A Needed Confession and Apology

By Thaddius Intravaia, Director of Information Technology

When you read the title, did you think “Oh no! What’s happened?” Did it entice you to read further to discover the confession? The title itself was subterfuge — not out of malice, but as an example. I used the same tactic that cyber criminals use to hook you into a phishing scam.

Phishing is a form of cybercrime which involves using deceptive techniques to gain access to sensitive information, such as usernames, passwords, credit cards or banking details. The attacks are initiated through misleading emails, text messages, or websites which initially appear to be legitimate.

Like the title I chose for my article, phishing emails employ urgent requests, alarming messages, or enticing offers to make you act quickly.

That’s the bait they use to set the hook. Then they reel you in.

By far the most popular method of phishing is through email. The attack starts when you receive an email stating that “your password is expiring” or “you must confirm your password” before your account is deleted.

Phrases that are engaging or panic inducing, like my title, and insist that action be taken as soon as possible are frequently used.

Image #1 shows a slightly modified example of a phishing email we’ve received at the cooperative. You can see they used a sense of urgency to try to entice the recipient. Our users are trained to look for this type of email and report it, so appropriate action can be taken.

How can you detect a phishing scam at home?

It just takes a degree of caution, some skepticism and remembering the C.A.R.E.S. method of staying safe.

CHECK THE SENDER’S IDENTITY

- Check the email address. If an email from Best Buy is coming from a gmail.com address, it’s not legitimate.
- If you aren’t confident, find another way to contact the organization to

verify. Most companies list their phone numbers online or offer online chat.

ANALYZE THE CONTENT

- Legitimate organizations will proof and verify communications before they are sent out. Grammatical and spelling errors are key indicators we use to detect phishing attacks.
- Since many phishing attacks originate in other countries, the language the email uses may feel off — it may use words or phrases we don’t commonly see in native English speakers.
- These are both signs to proceed with caution; the message may not be legitimate.

REJECT UNSOLICITED ATTACHMENTS

- If you receive an unexpected attachment, especially from an unknown sender, exercise caution. Malicious attachments can contain

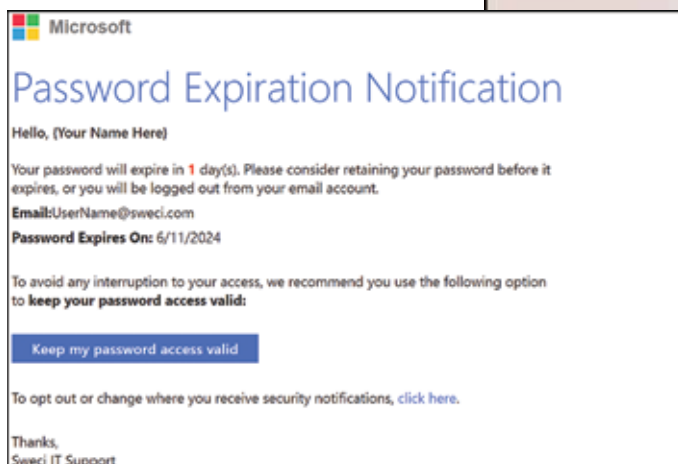


Image #1

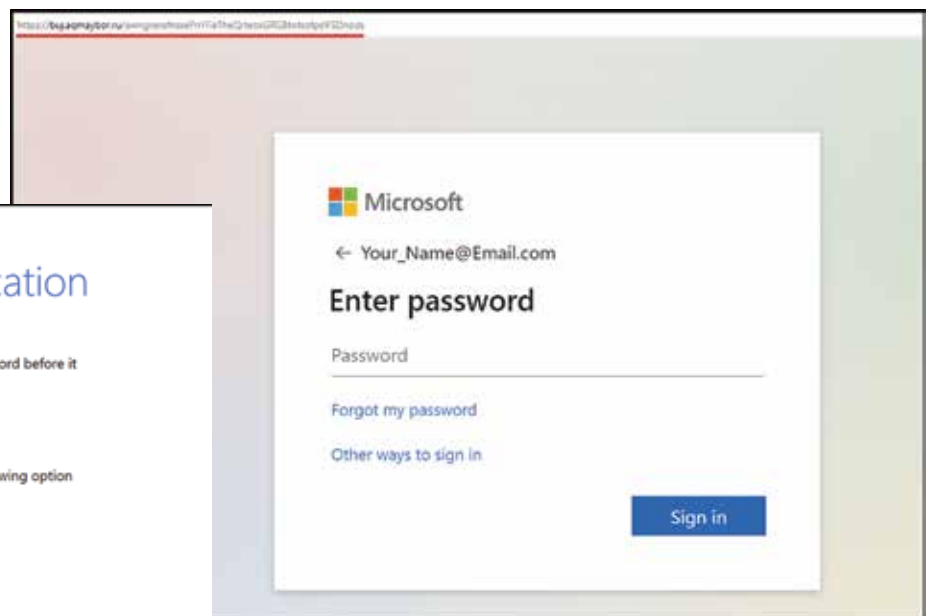


Image #2

The bad guys on the internet are very good at making fake websites look real.

viruses or malware designed to compromise your device or steal your information.

- For example, if you receive an email stating that you've been charged for a service you haven't purchased, claiming to have attached a receipt, do not open the attachment.
- Your first call should be to your bank to verify if there has been a charge (not the number listed in the email). Explain to your bank you received an email, and ask them to keep an eye on your account for a potential charge.

EXAMINE THE LINKS

- My recommendation is to never click links in emails unless you are 100 percent sure who the sender is, and they are someone you trust.
- If the link opens a web page asking you to log into your account, take a close look at the address in the bar at the top of the page. It should be related to the company or organization it claims to represent. Bad guys on the internet are very good at making fake websites look real (Image #2).

Image #2 is a screenshot from a well-crafted phishing site. While the page appears to belong to Microsoft, if you look closely, you'll see warning signs. The area underlined in red is the web address. It contains random letters and has no mention of outlook.com or Microsoft.com. This tells us the site is no good.

- If you are not sure, you can always navigate to the page another way, such as a saved bookmark, typing the address in manually, or by performing an online search for the service and logging in from there. This way you can be more confident you aren't sharing login details with the wrong people.

SEEK ADVICE

- Scammers are successful because they are very good at what they do. It's okay to ask for help, and it's always better to be safe than sorry. Speak with a trusted family member, talk to your neighbor, or call the company using a number you've saved or looked up online (never use the number in a suspicious email unless it matches a known valid number).

Moral of the story: It's okay to get a second opinion.

We all know there are risks online. My intention isn't to scare you into swearing off the digital world, but I do hope to have equipped you with a useful toolset, and that you'll use these tools to make yourself a little safer online.

The next time you receive a suspicious email, remember C.A.R.E.S.

A CISSP certified member of the NRECA Cybersecurity Member Advisory Group, Thaddius Intravaia, Director of Information Technology for Southwestern Electric Cooperative, provides cybersecurity training for co-op employees and mentors industry professionals new to the field.

Cooperative hosts Sept. 28 recycling drive in Greenville

Southwestern Electric will host an e-cycling drive at its Greenville office on Saturday, Sept. 28. Collection begins at 9 a.m. and ends at noon or when the truck is filled — whichever comes first. Electronics collected during the drive will be e-cycled by an EPA-approved recycling center.

Southwestern Electric's St. Jacob Office is located at 525 US Route 40, Greenville, IL 62246.

We can help you recycle a variety of electronics, including:

- Computers, printers, cables and peripherals (keyboards, mice, etc.)
- Fax machines, scanners, digital converter boxes, cable receivers, satellite receivers.
- Video game consoles, digital video disc player/recorders, portable digital music players.
- Networking equipment, server, telecommunications, phones, cell phones and clocks.
- VCRs, stereos, and audio/video equipment (including cable/satellite).
- Electrical, cabling, communication machinery, and equipment.
- Home electronics, blenders, toasters, irons, etc.



Please Note

- Rechargeable batteries (NIMH, Li-ion and NICD) will be accepted for a fee of 50 cents per pound.
- CRT TVs, console TVs, projection TVs and monitors will be accepted for a fee ranging from \$5-\$35 depending on their size and model. Please bring cash or check for payment.
- Light bulbs, DVDs, CDs, and VHS and cassette tapes and hazardous materials will not be accepted.

E-cycling — electronics recycling — is the process of refurbishing, redistributing and reusing electronic devices and components, rather than discarding them. It extends the lifecycle of electronics and lowers their overall environmental impact.

This will be the second of three e-cycling drives hosted by the cooperative. The first drive was held at the co-op's St. Elmo facility last month. The final drive will held in the fall at Southwestern's Greenville headquarters. The date has set to be determined.

Questions regarding e-cycling or recyclable items and fees may be directed to CJD E-Cycling at 618-414-9209 or info@cjdrecycling.com. CJD E-Cycling is a family-owned recycling business with offices in East Alton and Edwardsville. You can learn more about CJD E-Cycling and the materials they recycle at www.cjdrecycling.com.

April Outage

On the evening of April 18, a strong storm downed trees, snapped poles and power lines, and flung debris into the distribution system. By 6:40 p.m., about 3,200 members in Madison and Bond counties were without power.

Southwestern's operations and engineering teams assessed the system and deployed crews to isolate damaged circuits and restore power quickly and safely, which entailed clearing debris, replacing broken poles and repairing damaged lines near substations, then making repairs in more remote locations. By 10:15 p.m., Southwestern linemen had restored power to about 1,600 members.

Crews worked throughout the night and remained in the field the following morning, replacing poles and restringing power lines. By 9 a.m., crews had restored power to more than 3,100 members. About 40 members remained without service, with most of the outages related to broken poles. At that point, crews had been assigned to each outage. They completed final repairs around 10 a.m.



Top: Rick Mersinger, maintenance foreman; Braden Clark, journeyman lineman, and Jimmy Revisky (also at right), construction foreman, ready a pole for installation.





Top: Jake Cain, forestry journeyman (left), and Alex Goodin, forestry foreman, help Kari Wise of Marine detour around construction while Tyler Kunz, journeyman lineman, Prepares to connect power lines to a new pole. Above: Mersinger, Kunz, Revisky and Clark guide a pole into position. Below: Crews make final repairs before energizing lines on Rockwell Road in Madison County.



Dehumidifiers Help You **BEAT THE HEAT**

by Julie Lowe, Energy Manager

As anyone living in the Midwest this time of year will tell you, the heat and humidity are enough to make summer almost unbearable at times. Combined, they make air conditioning a Midwesterner's best friend during the summer months. While we're grateful for air conditioning, the extra energy use isn't easy on a bank account.

Fortunately, your air conditioner doesn't have to work alone. Another household appliance can operate with your A/C to keep your home comfortable while lowering your energy use.

Dehumidifiers are appliances that help maintain preferred — and healthy — humidity levels within your living space. They draw excess moisture from the air and prevent the growth of mold, bacteria, and other particulates — all of which could lead to a variety of health issues. The drier air also enables you to set your thermostat higher without sacrificing comfort.

HOW DO YOU KNOW IF YOU NEED A DEHUMIDIFIER?

Signs that signal you could benefit from the use of a dehumidifier include:

- Stains from moisture on your walls or ceiling
- Stuffy or damp rooms
- Your windows are covered with condensation
- A musty odor in your home
- You see mold

WHAT TO CONSIDER BEFORE PURCHASING A DEHUMIDIFIER

When paired properly with your A/C, dehumidifiers can reduce your energy use by allowing you to set your thermostat higher. But if not sized properly for your living space, they can use a lot of energy without providing the best return on your investment in terms of comfort and efficiency.

Be sure to do your homework before making a purchase. Research different models on the market, read consumer reviews and look into warranties. You want to be well informed and know what you're looking for before you buy.

Keep these points in mind while you do your research:

- Dehumidifiers are described in terms of pint capacity. Select a size suited to your home. There are models available for small rooms, mid-sized rooms, large rooms, basements and garages, and units designed to dehumidify an entire home. Be sure you're buying the correct size for the space you want to condition.
- Look for a model with an automatic shut-off feature. These units use intelligent software to monitor your environment. They shut down when they detect your living space is at the desired humidity level. In addition, these units will also

shut-off when their internal reservoir is full. This feature will ensure that the device only operates at its best ability.

- Look for the Energy Star rating. An Energy Star rating means the dehumidifier operates in an energy-conscious manner to help you save power — which saves money on your electric bill.
- You can also reduce costs by purchasing a timer-equipped model. You can set the humidifier to turn on before you arrive home, so it creates a comfortable space while you're there, and doesn't use energy while you're away.

Keep in mind that dehumidifiers will address humidity, but they aren't a solution for chronic dampness. If you have standing water in your basement, or you're fighting a persistent musty smell, you need to address the cause.

That may involve performing small DIY jobs, like cleaning gutters and repairing leaky pipes and faucets. Or it may involve larger, more labor-intensive tasks, like patching basement walls, installing a sump pump, adding exhaust fans to your bathroom and kitchen, repairing or installing new guttering, and regrading your yard for better drainage.

EFFICIENCY OPTIONS

Ready to buy a dehumidifier? Look for these energy-saving features:

- An Energy Star rating.
- An on/off switch so you can easily turn off the humidifier when you leave the room.
- A humidistat that lets you program a humidity level between 30 and 50 percent, which is the optimal range of humidity for most people.
- A timer that enables you to turn on the humidifier a little while before you come home from work. You can set the timer so your humidifier creates a comfortable space while you're present, and doesn't use energy while you're away.

GET THE MOST FOR YOUR MONEY

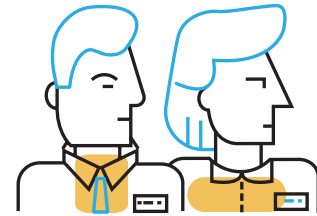
Simple steps will help your dehumidifier operate more efficiently.

- Start by reducing humidity at the source. Turn on an exhaust fan before you cook or take a shower.
- If you have a programmable model, set the humidistat to keep moisture at a moderate level, such as 50 percent.
- Leave your windows closed at night to keep dry air inside and warm, moist air out.
- Position the unit so air can easily circulate in and out.
- Clean the dehumidifier's filter regularly.

Steps to Solar Commissioning



Contact Julie Lowe, energy manager, at (800) 637-8667 or julie.lowe@sweci.com for our information and commissioning packet.



Contact your installer and insurance agent. Ask your installer for a one-line diagram. Request a certificate of insurance from your agent. They're welcome to send those documents to Julie Lowe at Southwestern Electric. Or if you'd like to review them, they can send them to you, and you can pass them along to Julie.



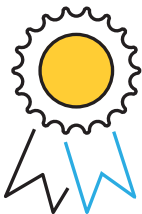
After your one-line diagram is approved by Southwestern Electric, you'll receive a \$500 invoice to cover the installation of your new dual register electric meter, a system inspection, and your array's interconnection to the grid. If your installer will be paying this invoice on your behalf, we'll send the invoice directly to them.



After installation is complete, contact us to schedule your system's on-site review and commissioning.



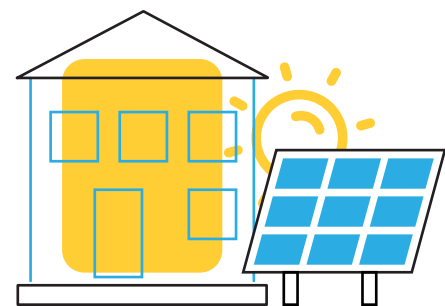
Our commissioning team will visit your site. We will inspect your system to verify it meets our safety specifications. A team member will review a memorandum of understanding with you. You'll sign this document for our files. Note: If you won't be present for commissioning, please schedule a meeting to review and sign the memorandum beforehand. After your system passes inspection, you go live! Your array is connected to Southwestern's distribution system.



We'll send you and your installer a certificate of completion. Your installer will submit this document for you, so you can receive your solar renewable energy credits (SRECs).



Each year, you'll submit documentation to confirm you've renewed your insurance. You may add us as a certificate holder on your policy so the renewal will be sent to us automatically each year.



Every three years, we'll visit your system to confirm it's connected properly, well-maintained, and that your safety signs are in place.

TROUBLED WATERS

You're driving a rural road through a heavy rainstorm. It's dark. Visibility is limited. You approach a section of pavement covered in water. The water doesn't appear to be deep, and the vehicle in front of you crosses the flooded area without trouble. You're faced with a choice: go back the way you came or take your chances.

When rivers are on the rise, the National Weather Service (NWS) has four words to live by: "Turn Around, Don't Drown." Turn Around Don't Drown® is the NWS-sponsored initiative to warn people of the hazards of walking or driving through flood waters.

According to the U.S. Centers for Disease Control and Prevention, more than half of all flood-related drownings occur when motorists attempt to drive through flood water. Pedestrians trying to cross flood water account for the second highest percentage of deaths.

Six inches of moving flood water can knock down an adult. Eighteen inches of moving water can carry away heavy vehicles. Once buoyant, a car can easily be pushed sideways by the current, trapping passengers inside and washing them downstream.

Never drive through flooded roadways. Take extra precautions at night, when it's harder to see flood dangers.

Here are additional tips to keep you safe and dry when creeks and rivers are on the rise:

Turn Around, Don't Drown

- 1) Always plan ahead and know the risks before flooding happens. Monitor a National Oceanic & Atmospheric Administration All-Hazards Radio or other news source for vital information on weather and road conditions.
- 2) If flooding is expected or occurring, get to higher ground as quickly as possible. Abandon areas subject to flooding, such as valleys and low ground near creeks and rivers, canyons and washes.
- 3) Avoid areas already flooded, especially if the water is flowing fast, and never attempt to cross flowing streams.
- 4) Never drive through flooded sections of road, even if the water appears to be shallow enough to cross. Water conceals potential hazards like shifted logs or rocks, dips in the road and washed out road beds. This is especially true at night.
- 5) Don't camp or park your vehicles along streams and washes, particularly during threatening conditions.
- 6) Never cross a barrier that's been put in place by local emergency officials. Not only is this dangerous, but many states and communities levy steep fines on people who ignore barricades and other road closure indications.



ONCE BUOYANT, A CAR CAN EASILY BE PUSHED SIDeways BY THE CURRENT, TRAPPING PASSENGERS INSIDE AND WASHING THEM DOWNSTREAM.



FLOOD STATUS

FLOOD WATCH

Rainfall is heavy enough to force rivers from their banks. Flooding is possible.

FLOOD WARNING

Flooding is in progress or very likely in an affected river, lake or tidewater area. If told to leave, do so immediately.

FLASH FLOOD WATCH

Flash flooding in specified areas is possible. You may need to act quickly.

FLASH FLOOD WARNING

Flash flooding is in progress or very likely along certain streams and select areas. Go to a safe place immediately!

STAY HIGH & DRY

Flooding is the leading weather-related cause of death in the United States. Every year, almost as many people die in floods as from hurricanes, tornadoes and lightning combined.

Flash floods can occur in a matter of minutes, depending on the intensity and duration of the rain, the area's topography, the condition of the soil, and ground cover.

Six inches of moving flood water can knock over an adult. A foot or two can carry away a vehicle.

BEFORE THE FLOOD

Avoid getting stranded. Leave flood-prone areas before flooding starts.

Learn which roads are prone to flooding and find alternative routes so you can avoid them.

Familiarize yourself with local emergency plans. Know where to go and how to get there if you need to evacuate.

Avoid camping or parking near creeks and rivers during heavy rainfall. These areas can flood without warning.

Stay tuned to phone alerts, TV, or radio for weather updates, emergency instructions, and evacuation orders.

DURING THE FLOOD

Never drive through flooded roadways. You can't determine the depth of the water or ground conditions. The road bed under flood waters may be severely damaged.

Take extra precautions at night, when it's harder to see flood dangers. Don't attempt to cross flowing streams on foot.

If floodwaters rise around your car but the water isn't moving, abandon your car and go to higher ground—but don't leave your car to enter moving water. Call for help.

Respect road barriers. The road or bridge may be washed out.

AFTER THE FLOOD

Avoid flood water. Standing water may contain dangerous chemicals, debris, and other health hazards.

Stay away from power lines and electrical wires. Water conducts electricity, and electrocution is a significant danger during floods. Report downed power lines to Southwestern Electric (or the local utility) and area emergency services.

Photograph damage to your property for insurance purposes.

OUT & ABOUT

Under an Hour Eldon Hazlet

You have 3,000 acres and less than an hour to explore.
What can you find in 59 minutes?

The best moments of your day.

Words & Photos by Joe Richardson



Delicate vegetation on the forest floor survived winds that shredded the canopy and splintered massive oaks.



You can't hike the whole of Eldon Hazlet State Park in under an hour. But you don't need to.

In 59 minutes or less, you can chase a deer into the undergrowth. You can spot a raft of pelicans turned bottoms up. You can circumnavigate trees felled by a storm a week earlier and climb through wilting canopy. Hear the cough of a Great blue heron. Watch egrets stalk fish.

You can marvel at the degrees of green — emerald, apple, army and sage, shamrock, olive, pistachio and pine — in a single cypress tree.

You can watch red-headed woodpeckers dart through skylights in treetops. Belly crawl through leaf litter. Study rotting timber, fresh tracks and old bones. Catalogue the anatomy of a toadstool from cap to gill to stem. Smell moldering leaves and lake musk.

You can feel the wind shift. Watch cloud shadow ghost across the water. Taste the sting of splintered oak, bug repellent and the sweat of an afternoon.

You can linger over a chinchilla-gray spider that wouldn't fill a thimble as it fits and starts along a bramble, stopping from thorn to thorn.

You can wonder at the elaborate architecture of a flower and look up to see it mirrored among thousands. Track butterflies that refuse to sit for a photograph. Step out of shadows and into light.

You can't hike the whole of Eldon Hazlet in under an hour.

You don't need to.

Fifty-nine minutes is more than enough time to find peace.



Top: A daring or bold jumping spider stalks prey on Cherokee Trail Loop #1. A great blue heron fishes shallows 20 paces from a pair of egrets. Wild garlic blooms in the sun on the south shoulder of Hazlet State Park Road. Above: A fallen tree bears evidence of insect damage. Below: Cypress trees heavy with seeds shelter wetlands north of Hazlet State Park Road.



WHO • WHAT • WHERE

As longtime readers know, in August we shift from our usual format to bring you Southwestern's annual report. So the solution to our June puzzle will appear in September, and we'll share your responses to this month's challenge in our October issue.

As we prepare to hit pause on our usual news, columns and features, we'd like to thank you for reading the magazine and writing to us. We're grateful for the time you spend with The Southwestern and your contributions to our Who~What~Where, Members in Focus, Hide & Seek and Remember When? segments, as well as the comments you share regarding our articles and photos.

We've said it in the past and it holds true today — your words and pictures are the best part of this magazine. Thank you for sharing your time, your talent, your opinions and your memories.

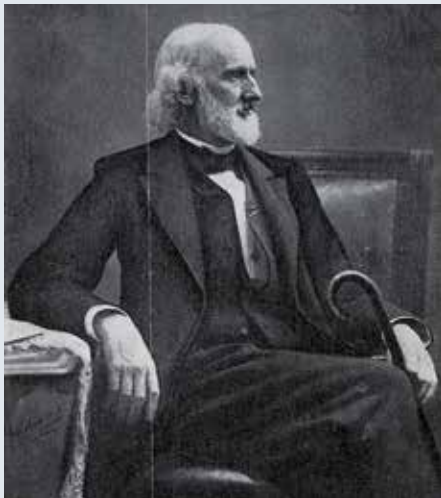


PHOTO COURTESY THE MIRIAM AND IRA D. WALLACH DIVISION OF ART, PRINTS AND PHOTOGRAPHS, PRINT COLLECTION, THE NEW YORK PUBLIC LIBRARY

Speaking of talent, congratulations to Dan Wiegand of Pocahontas for solving a particularly challenging Who Am I? puzzle. The clues were:

- Born in 1823, I was a lawyer, politician and prominent freemason.
- I attended Marshall Academy, in Marshall, Ill., and became an instructor in 1844.
- In 1848 my family moved to Vandalia, where I studied law and worked for my father's newspaper, "The Age of Steam."
- I was admitted to the bar in 1853 and practiced in Vandalia until 1858.
- I was initiated into freemasonry in 1854 and became the Grand Master of Illinois in 1864.
- While practicing law in Vandalia, I was a member of the same bar as Abraham Lincoln.
- In 1860 I was elected as a Presidential Elector for Lincoln.
- I served as a U.S. representative from 1865-1869.
- In 1867 I was awarded an honorary degree from McKendree College.
- I died in Denver, Colo., in 1903.

Dan identified our May mystery figure as H.P.H. Bromell.

On to this month's challenge: Can you identify the location of the art installation on the next page? If you have stories or photos related to the sculpture or the rescue cat turned outdoor ambassador it was named for, feel free to share them.

Have a safe and happy Independence Day, spend some time with our corporate report in August, and we'll be back with more puzzles in September.

Who-What-Where is a contest that challenges your knowledge of people, places and objects in and around Southwestern Electric Cooperative's service area. Here's how it works: Each month, we run a photo. Your job is to tell us who's pictured, what we've photographed, or where we shot the photo. You can email your response to joe.richardson@sweci.com or send it by mail to Joe Richardson, Southwestern Electric Cooperative, 525 U.S. Route 40, Greenville, IL 62246. Please include your name, mailing address, and hometown. If you have a story about our photo topic, include that as well—we love these! The puzzle solution—possibly accompanied by a few words from you—will appear in a future issue of The Southwestern.



WHERE ARE WE?

CO-OP KITCHEN

Summer Vacation Station



STRAWBERRY GINGER ALE

Ingredients

- 1 (6 ounce) package strawberry Jell-O
- 2 cups hot water
- 5 cups cold ginger ale

Directions

1. Dissolve Jell-O in the hot water and cool.
2. Add ginger ale and serve.

Three Hailstones
Prepared & photographed
by Mike Barns

EASY PARTY PUNCH

Ingredients

- 1 package red Kool-Aid
- 1 (46 ounce) can pineapple juice
- 1 (2 liter) bottle Sprite or 7-Up

Directions

1. Mix all ingredients together, chill and serve.

PINEAPPLE FROSTBITES

Ingredients

- 1 cup milk
- 1 cup frozen pineapple
- 1 package piña colada mix
- 1½ cups ice cubes

Directions

1. Place all ingredients in blender and mix until smooth.

FROZEN SNOWSHOES

Ingredients

- 1 cup milk
- 1 tablespoon powdered sugar
- ½ teaspoon vanilla
- 1 cup ice cubes
- Nutmeg

Directions

1. Place all ingredients in blender and mix until smooth.
2. Top with nutmeg.

THREE HAILSTONES

Ingredients

- 1 cup milk
- ½ cup frozen cranberries
- 2 tablespoons sugar
- 1 tablespoon lemon juice
- 1 cup ice cubes

Directions

1. Place all ingredients in blender and mix until smooth.



CURRENT EVENTS

July 4 - August 22 MUSIC IN THE PARK, Grafton. Bring your lawn chair or picnic blanket and listen to live bands and performers. Every Thursday 7 - 9 p.m. Admission is free. The Grove Memorial Park, corner of Market and Main Streets. Visit graftonilchamber.com.

July 5, 12, 19, 26 FIELD DAY FRIDAYS, West Alton. Join Audubon and Army Corps of Engineer staff to experience nature and learn what kind of plants, animals, flying and crawling creatures spend their time here. 9:30 - 11 a.m. Admission is free. Pre-registration is required. Audubon Center at Riverlands, Nature Amphitheater, 301 Riverlands Way. To register, visit riverlands.audubon.org.

July 5 - August 9 MUNY BAND SUMMER CONCERTS, Highland. Join us Friday evenings at 8 p.m. for free summer concerts. On the square, 948 Main street. Visit highlandmunyband.wixsite.com/muny-home.

July 11 SUMMERFEST AT LCCC, Godfrey. This free, family-friendly event is open to the public and will feature inflatables, petting zoo, face painting, climbing wall, food trucks, a visit from LCCC's mascot Blazer, information on academic programs, student support services, College for Kids, and local non-profit organizations. 4 - 7 p.m. After the event catch the Alton Myny Band Children's Concert at 7 p.m. Lewis & Clark Community College, 5800 Godfrey Road in the Hatheway back lot. Visit facebook.com/lewisandclarkcc.

July 11 - September 19 THURSDAY NIGHT LIVE CONCERTS, Highland. Enjoy live entertainment on Thursdays with different performers each evening. Bring your own lawn chair(s), blanket, cooler, etc. and enjoy the show. The Lions Club will be selling brats, pork burgers and chicken sandwiches. 7 - 9 p.m. Highland Downtown Square, 914 Main Street. Visit highlandil.gov.

July 12; August 9; September 13 SUMMER CONCERT SERIES, Litchfield. Enjoy live music by a different band each month. Food truck will be available. 6:30 - 9:30 p.m. Admission is free. Walton Park, 10207 Niemanville Trail. Email tourism@cityoflitchfieldil.com or call (217) 324-9075.

July 13 TOUR DE DONUT, Staunton. The "Tour de Donut" bicycle race is a spoof on the "Tour de France." From the mass start, the 34 mile route follows lightly traveled roads over rolling terrain. Riders can stop at two checkpoint stations (donut stops). While donut consumption is not mandatory, the rider is awarded a five minute time credit for each donut eaten. There is also a Tour De Donut Hole option, which consists of 12 miles and one donut stop. Registration at 7 a.m.; race 9 a.m. - noon. Staunton City Park at the corner of East Pennsylvania Street and Ash Street. To register, visit tourdedonut.org.

July 18 MONTHLY CRUISE-IN, Livingston. All makes and models welcome. We'll also have food, adult beverages and live music. Bring your kiddos and their powered cars for the

Powerwheels Parade at 6:30 p.m. No candy throwing, this is just for fun. We will also have a bounce house obstacle course. 5:30 - 8:30 p.m. Admission is free. Twistee Treat Diner, 908 Veterans Memorial Drive (Old Route 66). For more information, email bamaacres@gmail.com, call Suzann at (314) 650-8658 or visit facebook.com/pinkelephantantiquemall/events.

July 19 & 20 ARTISAN FAIR, Effingham. A weekend for visitors to enjoy fine art and one of a kind crafts for purchase, artisan demonstrations, food and drink and live music. Friday 5 - 9 p.m.; Saturday 9 a.m. - 4 p.m. Tuscan Hills Winery, 2200 Historic Hills Drive. Visit effinghamartisanfair.org.

July 19 & 20 RAILROAD PROTOTYPE MODELERS MEET, Collinsville. High-quality models, displays, visiting prototype layouts, and hands-on learning centers. Presentations by historians and modelers, over 20 railroad historical societies and tables of hand-picked scale model vendors—no swap meet stuff. Friday 9 a.m. - 5:30 p.m.; Saturday 9 a.m. - 6 p.m. Admission is \$35 for Friday and Saturday; \$25 for just Saturday. Gateway Center, One Gateway Drive. For more information, visit stlrpm.com.

July 20; August 24 CLASSIC FLICKS FOR CONSERVATION, Godfrey. Watch a classic movie on our giant inflatable screen. All movies this year will feature an episode of the 1939 movie serial "The Phantom Creeps" as a pre-film short. Bring your own lawn chairs or blankets, as well as your own snacks. No

alcohol is permitted. Limited parking is available, so arrive early. July movie at 8:30 p.m.; August movie at 8 p.m. Event is free but donations are welcome. The Nature Institute, 2213 South Levis Lane. Call (618) 466-9930 or visit thenatureinstitute.org.

July 20 PRAIRIE WILDFLOWER WALK, Hillsboro. A guided walk through our woodland trails. Refreshments will be served after the walk. 9 a.m. Bremer Sanctuary, 194 Bremer Lane. Visit bremersanctuary.com.

July 26; August 30 COMMUNITY BAND PERFORMANCE, Troy. Enjoy the sounds of the Troy Community Band. 7 p.m. At the gazebo in Tri-Township Park, 410 Wickliffe Street. The alternate site for inclement weather will be the adjacent recreation center/park district office. Find us on Facebook at Troy Community Band.

July 26-28 HERITAGE DAYS, Greenville. Tractor Pulls, field demonstrations, gas engine display, live music, grand-scale railroad, food, vendors, activities, steam engine, Baker fan, sawmill, threshing, The Lil' Red Barn Museum and pedal pulls daily. Friday and Saturday 8 a.m. - dark; Sunday 8 a.m. - 4 p.m. \$10 arm band for all three days; Sunday only \$5; children under 10 years of age free. American Farm Heritage Museum, 1395 Museum Avenue. Call (618) 664-9733 or visit americanfarmheritagemuseum.org.

July 27 LIEVERS HUMMING-BIRD FESTIVAL, Worden. The Lincoln Land Association of

Call to Confirm

Listings are provided by event organizers or taken from community websites. We recommend calling to confirm dates, times and details before you make plans. All are subject to change.

Submissions

To submit an event for consideration in our calendar, email your event information to joe.richardson@sweci.com. Please use our Current Events format (as seen on these pages) to write your submission. Include a contact number or email and submit your listing at least two months prior to your event.

Bird Banders will catch and band hummingbirds. Experts will discuss hummingbirds, the banding process and how to encourage these gorgeous birds to visit your yard. Opportunities to “adopt” and release banded hummingbirds are on a first-come basis. A donation is suggested for each adoption. The adopters will receive updates when their banded hummingbird is found somewhere else. Visitors are encouraged to bring lawn chairs, water and sunblock. 2:30 - 5:30 p.m. Paula & Jeff Lievers Residence, 8203 Brickyard Hill Road. Follow Route 4 to Wieseman Road. Follow Wieseman Road about 2.5 miles west to Brickyard Hill Road. Follow Brickyard Hill Road about a half mile west to the Lievers home. Watch for signs—your GPS may not be on the mark. Email paula@gomadison.com.

July 27 & 28 SMOKIN' ON MAIN BBQ COMPETITION & FESTIVAL, Collinsville. There will be some of the top BBQ food and drink vendors from near and far and great live entertainment. The event will also have a vendor's row and on-site BBQ supply. Meet BBQ legends in the pro circuit and industry. All proceeds will benefit the Collinsville food pantry and the U.S. Veterans Foundation. Saturday 11 a.m. - 10 p.m.; Sunday 11 a.m. - 5 p.m. On Main Street in uptown Collinsville. Visit smokinon-main.com.

July 28 CHICKEN DINNER, Marine. Buffet style chicken dinner with homemade dressing, mashed potatoes and gravy, green beans, slaw, and desserts. Event also includes raffle, bingo, and attendance prizes. Dinner starts at 11 a.m. with tickets sold until 5 p.m. Adults \$15; children 6 - 10 years of age \$7; children under 5 years of age are free. Carry-outs available. St. Elizabeth Catholic Church, 120 N Windmill St. Call (618) 887-4535.

July 28; August 25; September 22 SYMPHONY CON-

CERT SERIES, Edwardsville. Family-friendly free concerts performed by the Edwardsville Symphony. This season's theme is “The Color of Music” linking tone, color, timbre and art to music. Free children's activities during each concert. Bring your own lawn chair or blanket. Pre-concerts by local dance schools and artists at 6:30 p.m.; symphony starts at 7 p.m. Edwardsville City Park, 101 South Buchanan Street. Visit edwardsvillecommunity-symphony.com.

August 2 & 3 PARTY AT THE BEACH FESTIVAL, Pontoon Beach. Come out and enjoy carnival rides, food and drink booths, and live music featuring Winger on Friday and Sara Evans Saturday. Friday 4 p.m. - midnight; Saturday 10 a.m. - midnight. Admission is free. Randall D. Dalton Veteran's Park, 5111 Highway 111. Visit pontoonbeachil.com.

August 2-4 GATEWAY DULCIMER MUSIC FESTIVAL, Fairview Heights. Festival will include workshops all day Friday and Saturday, evening concerts, vendors, raffles, jamming and Sunday hymn sing. Enjoy music featuring mountain dulcimer, hammer dulcimer, autoharp and ukulele. Each day starts at 8 a.m. and ends after the evening concerts around 9 p.m.; concerts start at 7 p.m. Full festival with workshops both days includes lunch and concerts \$160; Friday or Saturday 1 day only includes lunch and concerts \$80; concerts (only) \$10 each night. Four Points by Sheraton, 319 Fountains Parkway. For more information or to register, visit gatewaydulcimer.org, email Sharon at hsharon1965@gmail.com or call (618) 651-8271.

August 8-11 MILL ROAD THRESHERMAN'S SHOW, Altamont. Explore a century of farming. Using antique farm equipment from the past. Demonstrating it in the present. Preserving it for the future. The four-day event will take you back to country life on the

central Illinois prairies. Farming and tractor events, horse farming, bluegrass music, women's activities, children's events and more. Camping is available on the grounds. Admission is \$8 and children 12 and under are free. Effingham County Fairgrounds, 722 East Cumberland Road. For more information, visit millroadthresherman.org or facebook.com/millroad-thresherman.

August 17 ROTARY CRITERIUM BICYCLE RACES, Edwardsville. A series of high-speed professional and amateur bicycle races complemented by a running event, free kid's races, a kid's zone with an art tent, and entertainment zone complete with live music, food and beverages. Hundreds of cyclists from over 10 states will compete for \$10,000. This is a fund-raiser for community enhancing projects. 11:30 a.m. - 11 p.m. For more information, visit edwardsvillecriterium.page.

August 23-25 KIRCHENFEST, Highland. Festival offers food (including a Bavarian skillet dish prepared on a 500-pound skillet) and a sit-down chicken dinner, live music, games, live auction, flea market, competitive run, bike race, bingo, raffles, and more. Admission is free. Friday 5 p.m. - midnight; Saturday 7:30 a.m. - midnight; Sunday 8 a.m. - 10 p.m. St. Paul Catholic Church, 1412 Ninth Street. Visit stpaulkirchenfest.com.


August 23-25 MIDWEST SALUTE TO THE ARTS, Fairview Heights. Event features local and national artists, artist demonstrations, live entertainment, children's gallery and food trucks. Friday 6 - 10 p.m.; Saturday 10 - 8 p.m.; Sunday 11 - 5 p.m. Admission is free. Moody Park, 525 South Ruby Lane. Visit midwestsalute.com.

August 23-25 ROUTE 66 UFO FESTIVAL, Livingston. Event will feature live music, food, drinks, vendor market, 5K Alien Chase run/walk, UFO games,

cornhole tournament, inflatable obstacle course, adult and children's alien costume contest (daily judging at 5 p.m.). Breakfast at Twistee Treat Diner 7 - 11 a.m.; regular menu after 11 a.m. Friday and Saturday 9 a.m. - 8 p.m.; Sunday 9 a.m. - 5 p.m. Admission is free. The Pink Elephant Antique Mall, 908 Veterans Memorial Drive (old Route 66). For more information, email bamaacres@gmail.com, call Suzann at (314) 650-8658 or visit facebook.com/pinkelephantantiquemall/events.

August 24 5K ALIEN CHASE RUN/WALK, Livingston. Chase the Alien through the town of Livingston and along Old Route 66. Terrain will be city and rural roads/frontage road with some hills. 8 a.m. registration; 9 a.m. start time. 15 years of age and older \$25; ages 5 - 14 \$20; free for ages 4 and younger (plus online processing fee). Pre-registration online before 4 p.m. August 7 guarantees registrant a race t-shirt. Can register the day of the race in person. A portion of the proceeds to benefit Kellsie's Hope Foundation. The Pink Elephant Antique Mall, 908 Veterans Memorial Drive (old Route 66). To register, visit route66ufo-festival.hytix.com. For more information, email bamaacres@gmail.com, call Suzann at (314) 650-8658 or visit facebook.com/pinkelephantantiquemall/events.

August 25 PEACH FESTIVAL, Grafton. Local peach growers from all over the area will be presenting their peaches for visitors to sample and purchase. Festival will also feature live music, fresh produce, unique vendors, kids activities, locally made wine, and the peach pitting contest. 11 a.m. - 3 p.m. Admission is free. Pere Marquette Lodge & Conference Center, 13653 Lodge Blvd. Visit pmlodge.net.



Jimmy Revisky, construction foreman, prepares a pole for placement after a long night of restoration efforts following an April 18 storm.

THE FINAL FRAME

VOTER REGISTRATION CARD 2024 *Please sign and present this card at the registration table.*

86th Annual Meeting of Members

Saturday, September 7, 2024



Member Signature _____

Please enroll me in Operation Round Up

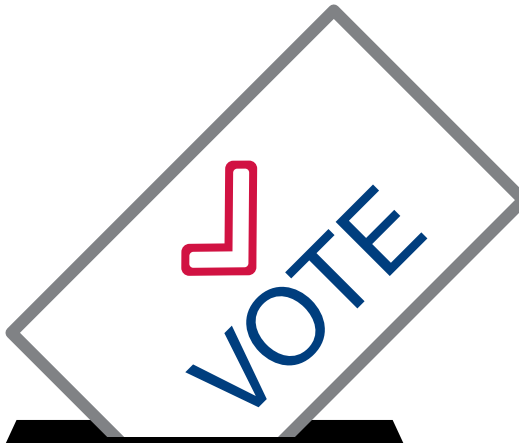
PLEASE UPDATE YOUR CONTACT INFORMATION

Home Phone # (if applicable): _____ Cell Phone #: _____

Service Address: _____ Billing Address: _____

Email Address: _____

Fill out and present this registration card to receive an additional \$10 bill credit!



2024 Annual Meeting Voting Schedule

\$30 bill credit with your pre-printed registration card, \$20 bill credit without your pre-printed registration card.
Bill credit to be applied on the October bill — same credit amounts offered for early and day-of-meeting voting.

Greenville office, 525 US Route 40, Greenville	Aug. 28 remains open to 7 p.m. Sept. 5 remains open to 7 p.m.
St. Jacob warehouse, 10031 Ellis Road, St. Jacob	Aug. 27 from 4 to 7 p.m. Sept. 4 from 4 to 7 p.m.
St. Elmo warehouse, 2117 East 1850 Avenue, St. Elmo	Aug. 29 from 4 to 7 p.m. Sept. 3 from 4 to 7 p.m.
American Farm Heritage Museum, 1395 Museum Avenue, Greenville, IL 62246	Sept. 7 from 8 to 10 a.m.

In addition to the above times, any member of the cooperative can vote during normal business hours at our Greenville office beginning at 8 a.m. on Friday, Aug. 23 through 4:30 p.m. on Friday, Sept. 6. We are closed on Monday, Sept. 2 in observance of Labor Day.

